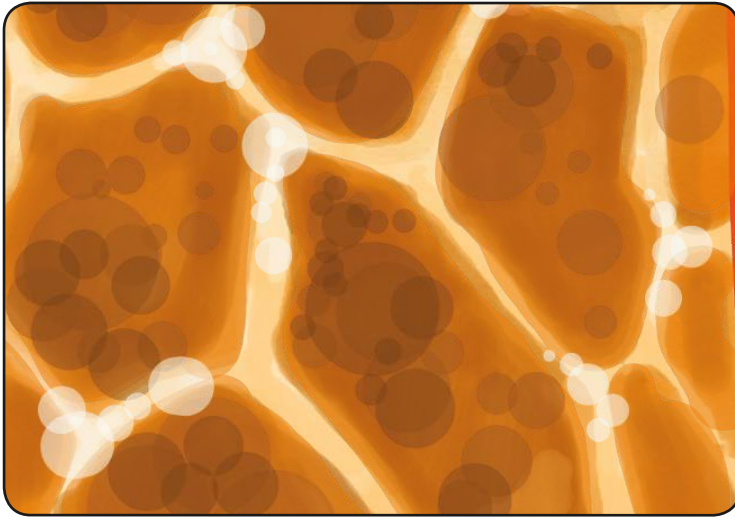


Who Clues

Open-ended flash cards make it easy to match your questions with the child's language abilities. Think about the 5 senses when asking these WHO questions. What does the animal sound, feel, look, and even smell like? Some examples include: "WHO has yellow feathers?" "WHO's fleece is fluffy like a cloud?" "Who is shaped like the letter S?" You can use **Hoo Hoo Who?** for inspiration!

WH- Questions are the building blocks of language development!



Who Faces

WH- Questions are the building blocks of language development!

Open-ended flash cards make it easy to match your questions with the child's language abilities. Some examples include: "WHO has red eyebrows?" "WHO is looking down?" "WHO is thinking about ice cream" Make sure your expectations match their ability. Some children may start by pointing to the correct face and work up to saying "The one in the middle," or "The orange one."

